



# **Digital portfolio as a tool for developing language as well as thinking**

Susanne Loheman,  
Speech therapist

Resource Center for Speech and Language,  
Specialpedagogiska Skolmyndigheten, Sigtuna



[susanne.loheman@spsm.se](mailto:susanne.loheman@spsm.se)





# What is SLI?

- **Specific language impairment (SLI)** is a developmental [language](#) disorder that can affect both expressive and receptive language. SLI is defined as a "pure" language impairment; meaning that is not related to (or caused by) other developmental disorders, [mental retardation](#), neurological ([brain damage](#)), or [hearing impairment](#).
- Wikipedia



## **The short simple explanation.**

For some reason, the **auditory perception** is impaired, which can cause a chain of consequences.

**Working memory** is almost always affected.  
Provides a major impact on learning.



A child with SLI has difficulties with

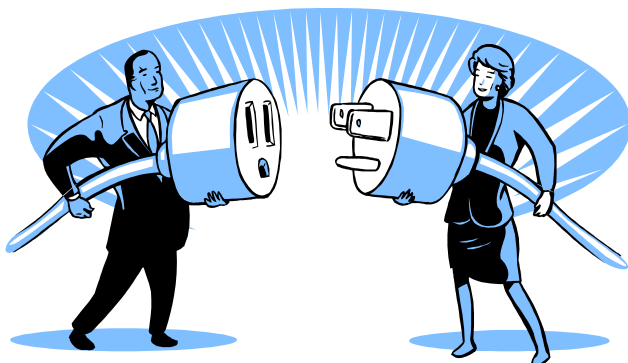
- language **form**
- language **content**
- language **use**

... But often with a combination of all these important parts of language.



# Language Disorder mainly affects

- learning ability
- social contacts





# Finding strategies

- Knowledge
- Find the right language level
- Using AAC
- Visual inforcement GAAC
- Sign language SAAC
- The computer
- Pre-understanding





# Why portfolio?

- See development through reflection
- See yourself as a student who is in development
- Raising self-esteem
- Connect to the curriculum
- Connect to the grading criteria



## Why digital?

- Digital –you can put so much more in it!
- Multiliteracy-Scanned pictures, film, sound and photos.
- The computer is a tool for the future.
- A compact disc or just a file for to present you to the new teacher.
- Blog-Facebook-My space



# Digital portfolio

- Leave school with a CD as a medal around your neck.
- Show who you are, even if you can't say it!
- Let's look at a portfolio.